



UPSTREAM
TECHNOLOGY



GEOPHYSICAL SURVEY CAPABILITY

The Upstream Technology GeoSurvey Division provides advanced offshore and nearshore geophysical survey services, delivering high resolution seabed and sub seabed intelligence to support safe, efficient marine development.

Operations are underpinned by two containerised Autonomous Underwater Vehicle (AUV) systems capable of surveying in water depths from 10 to 300 metres. Each AUV is configured with an integrated multisensor payload that can be tailored to client specific requirements, without limiting the ability to operate multiple sensors concurrently. The standard configuration includes Multibeam Echosounder (MBE), Side Scan Sonar (SSS), 2D and 3D Sub Bottom Profilers (SBP), and Magnetometer (MAG). This flexible approach enables detailed seabed

mapping and shallow geological characterisation, with sub bottom penetration of up to six metres depending on prevailing ground conditions.

Containerised deployment from vessels of opportunity enables rapid mobilisation and significantly reduces vessel and logistics costs. Simultaneous multi AUV operations increase survey coverage, improve schedule certainty, and lower cost per line kilometre.

With more than 20 years of experience and over 3700 dives covering more than 130 000 line kilometres of survey data acquired, the Upstream Technology GeoSurvey Division offers a proven, flexible and cost effective geophysical survey capability for complex offshore environments.

20 Years

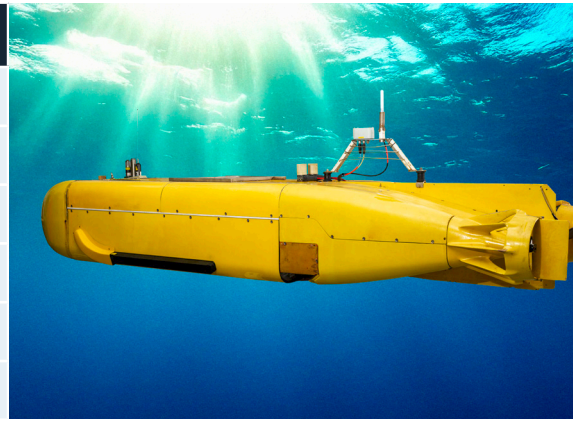
3,700+ dives completed, capturing over 130,000 line kilometres of survey data.

10m - 300m

AUV-powered systems, built to survey shallow and nearshore water.

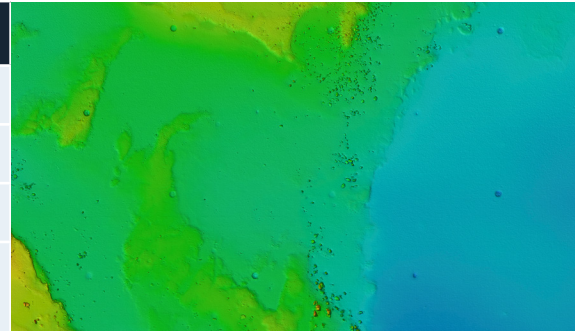
AUV SPECIFICATIONS: MARIDAN 600

Dimensions	4.5m x 1.2m x 0.6m
Weight	1600kg
Depth Rating	600m
Optimal Speed	3 kts
Endurance	13 - 17 hours
Navigation	Sonardyne SPRINT-Nav 700



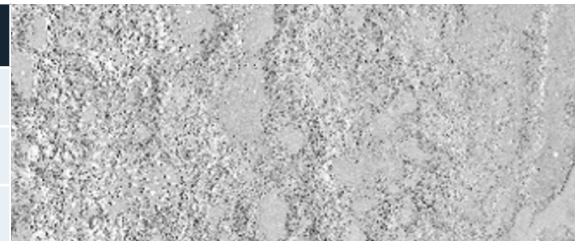
BATHYMETRY: R2 SONIC 2024

Frequency	Selectable 200kHz - 400kHz
Beams	256
Ping Rate	Range dependant, up to 60Hz
Backscatter	Recorded simultaneously with bathymetry data



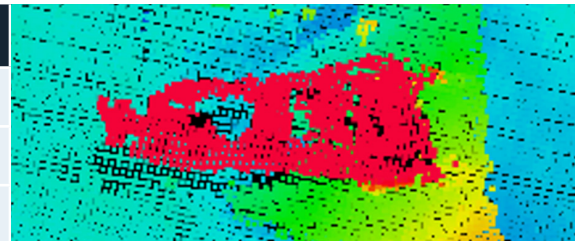
SIDE SCAN: KLEIN UUV-3500

Frequency	250kHz
Range	Selectable 50m - 300m
Ping Rate	Range dependant, up to 13.5Hz



MAGNETOMETER: MARINE MAGNETICS SeaSPY

Measurement Range	18000nT - 120000nT
Sampling Rate	0.1Hz - 4Hz
Operating Mode	AUV towed



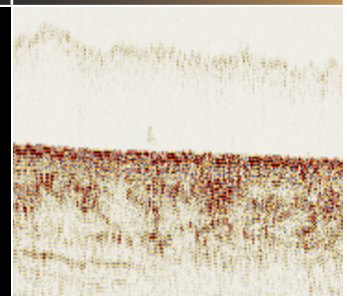
SUB-BOTTOM PROFILER: PROPRIETARY CHIRP BASED WITH 3D MODE

Frequency	2kHz - 12kHz
Ping Rate	Selectable, up to 4Hz
Sample Interval	40kHz
2D Mode Dataw	Time profiles
3D Mode Data	Volumes, 0.5m x 0.5m spatial resolution

3D VOLUME



2D SBP



CONTACT US

SIMANGELE SONI
SNR BUSINESS DEVELOPMENT MANAGER

T +27 10 346 5088
E SIMANGELE.SONI@DEBEERSGROUP.COM

MICHAEL WINSTANLY
SENIOR TECHNICAL OPERATIONS MANAGER

T +27 21 508 9181
E MICHAEL.WINSTANLY@DEBEERSGROUP.COM